

Spatial Display

Searching MicroImages' ArcIMS Catalog



There are two steps in the selection of ArcIMS layers for display in the TNT products. In the first step you select the ArcIMS service using the ArcIMS Service Selection window. The first three tabbed panels of this window and their shared features are discussed in the Technical Guide entitled *Spatial Display: Locating and Using ArcIMS Layers*. The second step, which involves the ArcIMS Layer Controls window is also discussed in that TechGuide. The two remaining advanced features of the ArcIMS Selection window located on the Search and Preview panels are discussed in this TechGuide. The Search and Preview panels operate the same for ArcIMS and WMS layers (see the TechGuide entitled *Spatial Display: Searching MicroImages' WMS Catalog*).

Search Panel

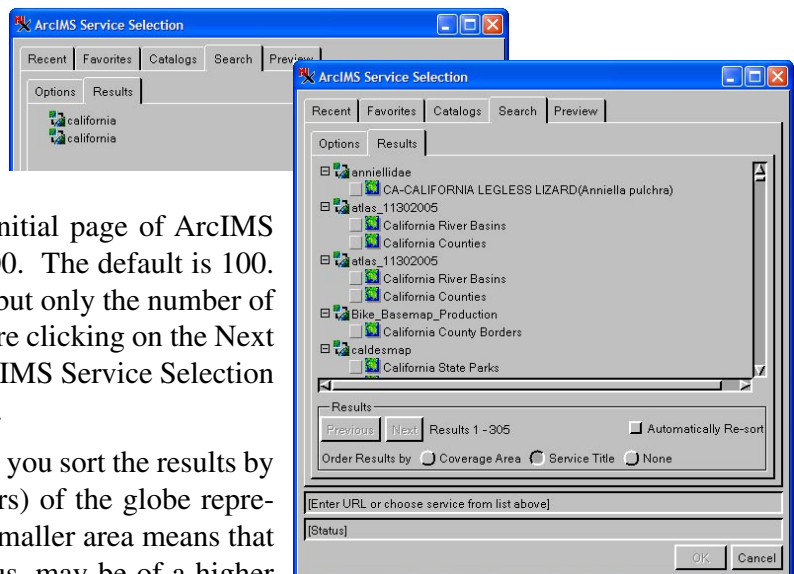
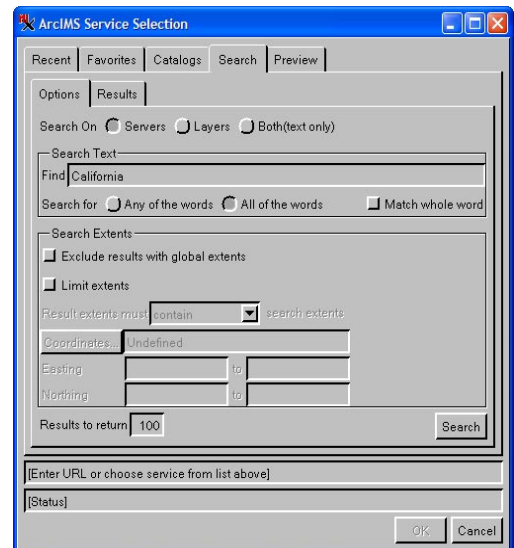
The Search panel lets you search for ArcIMSSs and layers of interest by specifying specific areas or topics. MicroImages continuously searches the Internet and maintains an updated database of all geodata layers published by any ArcIMS service. Any search you make using the Search tabbed panel uses the current catalog on MicroImages' web site, so each time you search you are getting the latest results. The Search panel has two tabs: Options and Results.

Search Options panel. You can search for ArcIMSSs or ArcIMS layers of interest by entering text and/or by specifying geographic extents. When using text as your search criterion, you can search both servers (ArcIMSSs) and layers in a single pass. When searching servers, the url and server name are searched for the entered text. When searching layers, the layer's name is searched. You can choose to eliminate results with global or nearly global extents (which means N 89.5° to S 89.5° and E 179.5° to W 179.5° or greater) or define the area to limit results to if you are searching layers or services but not when searching both. Choosing to exclude results with global or nearly global extents prevents you from getting the large number of global data sets that would automatically contain your area of interest. When you turn on the Limit extents toggle, the fields for defining geographic extents become active. If you are adding ArcIMS layers to a group that already has other layers in it, you have the option of matching the extents of the group to which the ArcIMS layer is being added or the current view extents in addition to manually defining the geographic extents.

The text searching options include searching for any of the words entered, searching for all of the words entered, and matching whole words only (for example, micro would match MicroImages and microscope with this toggle off but not with it on).

The maximum number of results returned for the initial page of ArcIMS services and/or layers that match your search is 1,000. The default is 100. The number does not limit the extent of your search but only the number of ArcIMS services and/or layers to scroll through before clicking on the Next button. Once you click on the Search button, the ArcIMS Service Selection window automatically switches to the Results panel.

Search Results panel. The Search Results panel lets you sort the results by the service title or by the ground area (square meters) of the globe represented by the layers available from the ArcIMS. A smaller area means that the layers shown cover a more local region and, thus, may be of a higher



resolution. You can also choose not to sort the results in which case they will be listed in the order found. The Automatic Re-sort toggle places newly found ArcIMSSs/layers in their correct position on the list as they are found. The number of results to return specified on the Options panel determines how quickly results are displayed and also how many results you have to scroll through before the Next button is active. Limiting results to 50 provides a list of 50 (or fewer) services/layers to scroll through. If more than 50 results were found, the Next button is also immediately active. Once the Next button has been used, the Previous button becomes active.

Preview Panel

The Preview panel lets you view the layers provided by a service before adding them to your composite display. If you used the search panel to find individual layers, the Preview panel will be active when one of these layers is selected. To view selected layers, click on the Redraw icon. The Redraw after any change icon toggle is off by default. When this icon is toggled on, a redraw is initiated when you click on the Preview tab.

You can use the *Open new view window* icon to open additional Preview windows if desired. The same layers are shown in all Preview windows, but you can be zoomed in on different areas in different windows. In addition to the buttons for zooming in and out, the display hotkeys that zoom in and out around the cursor position (+ and -, respectively) are active. Clicking in the view will also zoom in 2X around the location of the click. The Zoom to Location function is also available so that you can zoom to a designated location at an optionally specified scale.

