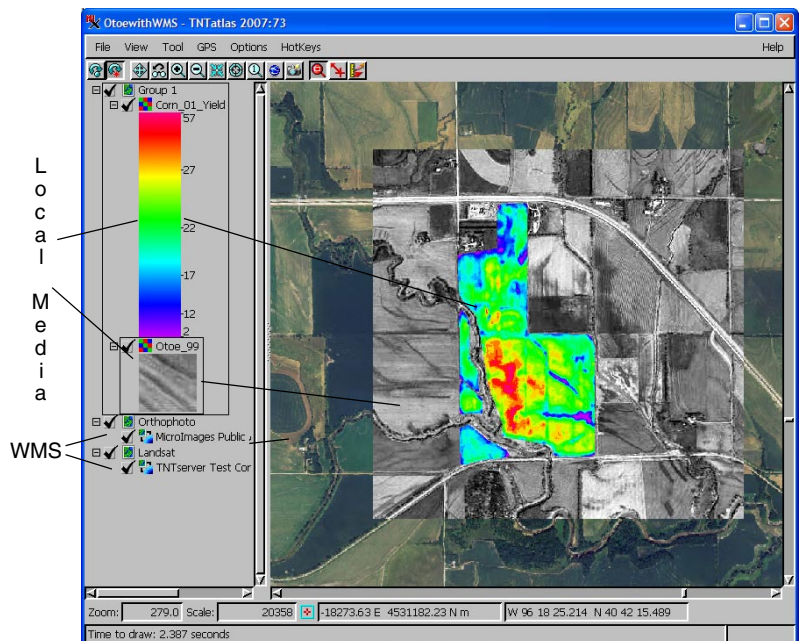


TNTAtlas

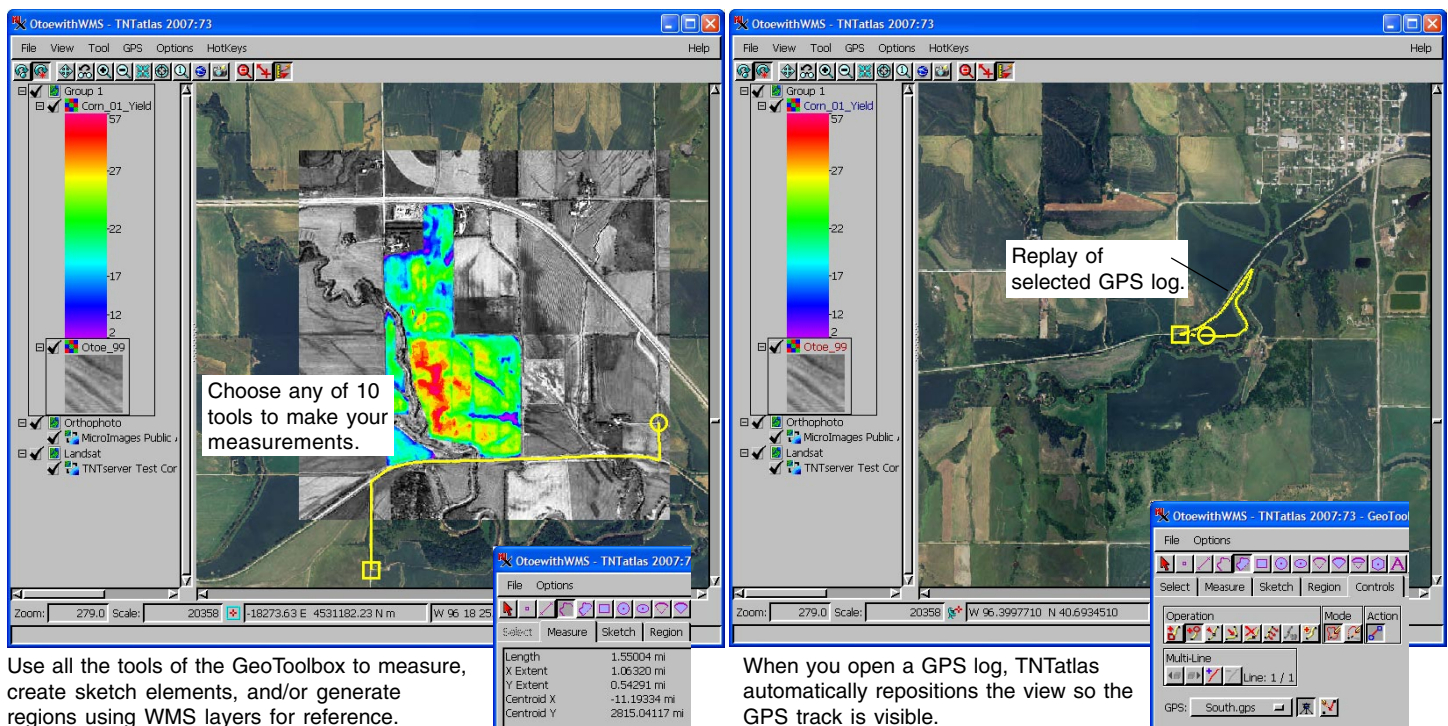
Viewing WMS Layers in Layouts

Web Map Service (WMS) layers can be viewed in TNTAtlas if they have been saved as part of a layout created in TNTmips, TNTedit, or TNTview. Such layouts can also include layers available on CD or DVD. All of the features and tools available in TNTAtlas with other layer types, including sketching, measuring, and GPS tracking, are available for use with WMS layers. Access to the Internet or intranet server that provides the WMS layer(s) is all that is needed for you to view them in TNTAtlas. As with other types of atlas layers, all display parameters are determined for you by the atlas designer. For information on additional features available for WMS layers in other TNT products, see the Technical Guides entitled *Spatial Display: Select WMS Layers for Viewing* and *Viewing WMS Layers*.

The GeoToolbox lets you do manual photointerpretation by sketching, assigning attributes, and/or labeling elements. In addition to manual input, you can track live GPS input or playback pre-recorded GPS logs. Continuously updated measurements are provided for GPS input, and the track can be added to a sketch or used to create a region. Any measurements made can be recorded in a text file. Additional region manipulations, such as generating buffer zones or combining regions, are also available in the GeoToolbox or from a right mouse button menu over the view while the GeoToolbox is open.



The layout shown above in TNTAtlas has two local layers, which could be on CD or DVD or a local drive and two layers from two different WMSs.



Use all the tools of the GeoToolbox to measure, create sketch elements, and/or generate regions using WMS layers for reference.

When you open a GPS log, TNTAtlas automatically repositions the view so the GPS track is visible.