



TNTmap Viewer Help

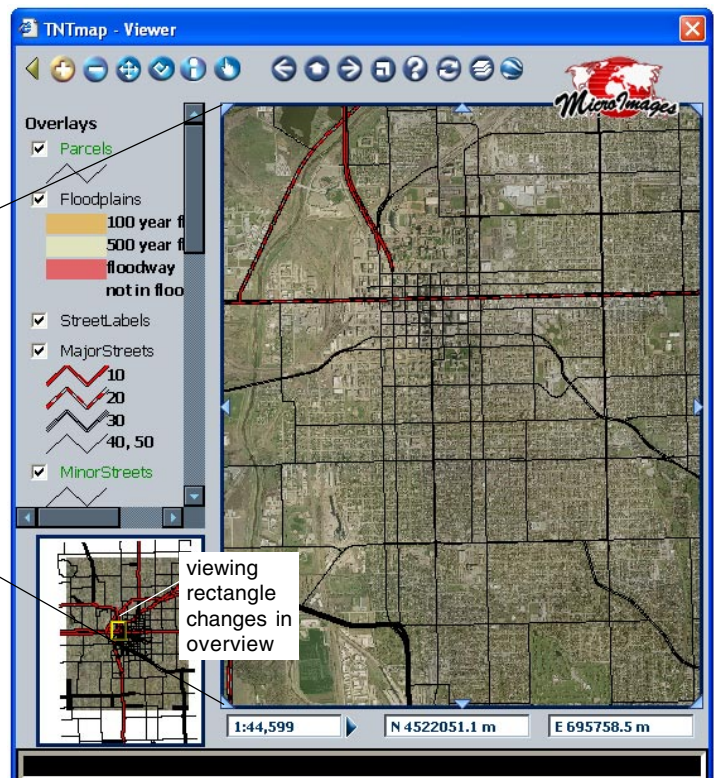
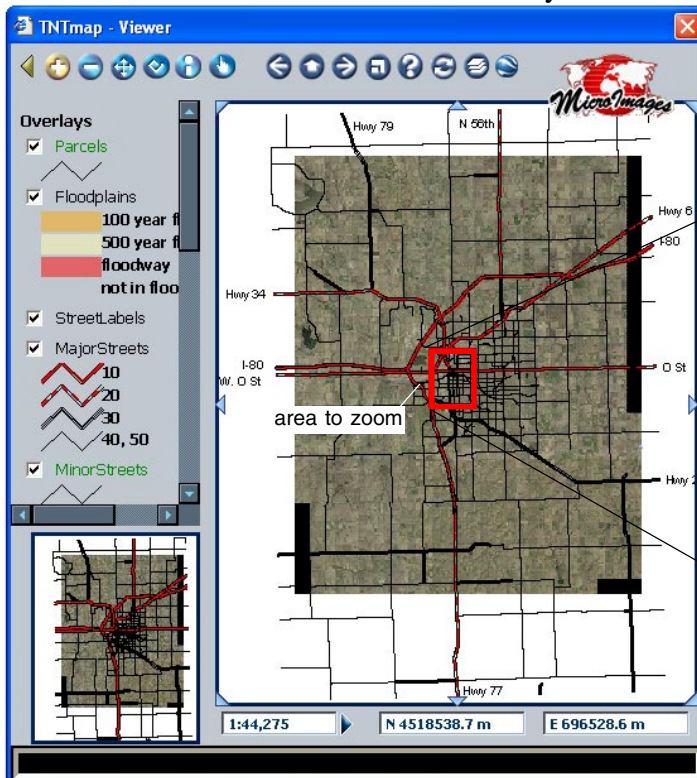
TNTmap Viewer is launched when you select an atlas for viewing from MicroImages' web site (www.microimages.com/tntmap) or from TNTmap Builder with the WMS layers you have selected. TNTmap Viewer runs in an Internet browser including Internet Explorer, Safari, Firefox, and Mozilla. TNTmap Viewer provides tools so you can zoom, navigate, measure, and acquire other information about the layers in the atlas selected. You can also open your current view as an overlay in Google Earth. Using the companion TNTmap Builder, opened via an icon in the TNTmap Viewer window, you can also acquire and add image and map content from any other web site providing a Web Map Service.


Viewing Modes

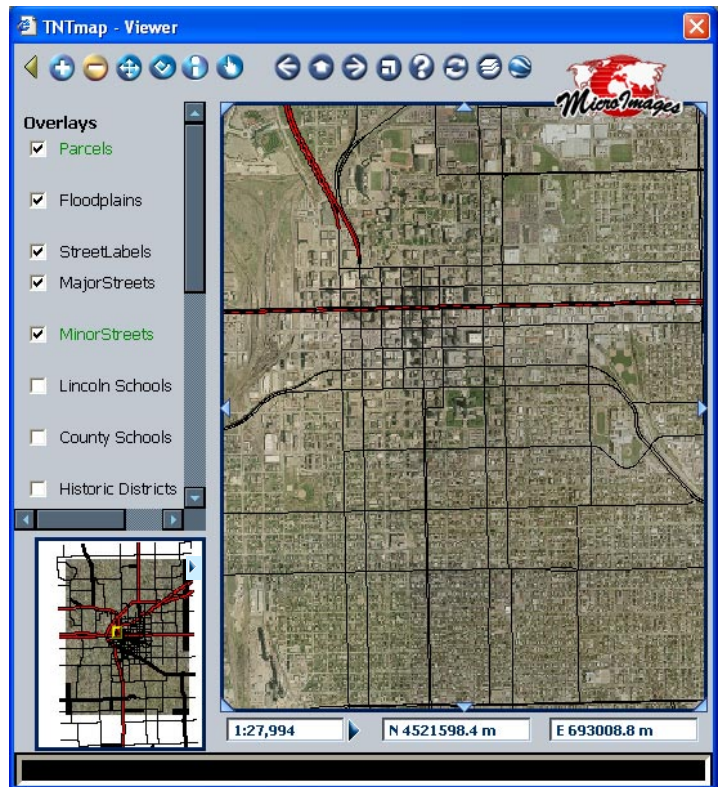
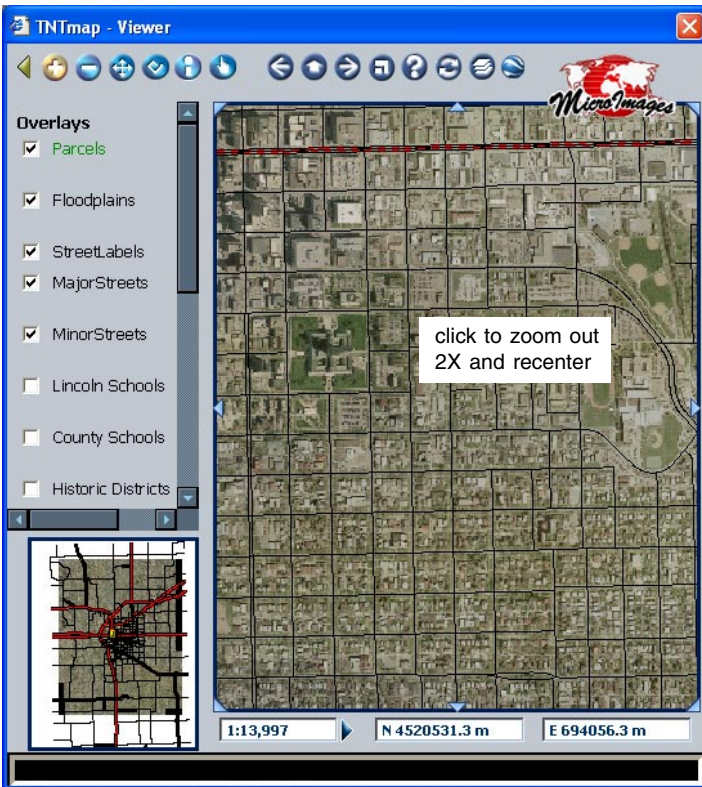
Viewing modes are activated by clicking on one of the tool icons at the upper left of the TNTmap Viewer window. When a tool is active, it changes from blue to gold.

 **Legend On/Off.** Turns the legend at the left of the window on and off. When off, the view canvas expands to the full width of the window at the top. The overview remains in place at the lower left unless there are no layers on the Overview panel of TNTmap Builder or you use the Overview On/Off toggle.

 **Zoom In.** When the Zoom In tool is active, it operates in two ways. You can click and zoom in 2X centered on the position you clicked in the view or you can click, hold, and pull out a box around the area you want to zoom to the size of the view canvas. You can zoom in on the view canvas or the small overview at the lower left. If you hold the Alt key and click, you will zoom out; holding the shift key and clicking repositions the view centered on the cursor location when you clicked.

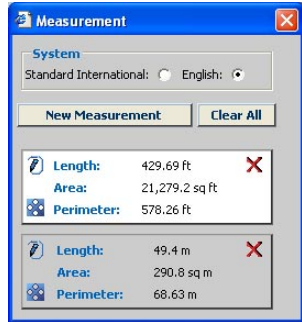


 **Zoom Out.** The Zoom Out tool also has two modes of operation. You can click and zoom out 2X centered on the position you clicked. You can also draw a box that represents the area the current canvas contents will occupy when the view zooms out; the rest of the view canvas will be filled in with surrounding data. If you hold the Alt key and click, you will zoom in. Holding the shift key and clicking repositions the view centered on the cursor location at the time you clicked.

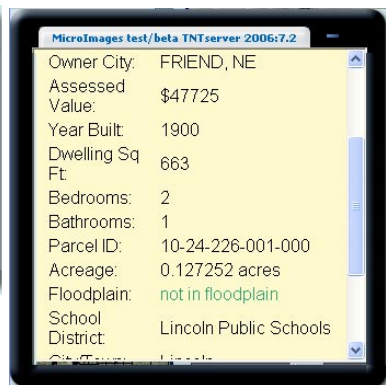


Recenter. The Recenter tool moves the position you click to the center of the view canvas without changing the scale of the layers in the view. Holding the shift key and clicking recenters the view on the location of your click in any of the zoom modes.

Measure. The Measure tool lets you make linear and area measurements by drawing over or around the features you want to measure. Click anywhere in the view canvas to start drawing. Details for each measurement you make appear in a separate Measurement window. The Measure tool is simple to use but has many features that are discussed in more detail in a following section.












Show Feature Info. When this tool is selected, clicking on the image in the view opens a window with information about the feature at the location clicked. The information provided is that set up for viewing as a DataTip in MicroImages' professional products. See the Quick Guide entitled Multiline DataTips for how to produce DataTips with more than one line for a given layer. Any links to files or other web sites for the location also appear in this window. If the link is a hierarchical link (to another layout), clicking on it will open an additional TNTmap Viewer window with the linked layout displayed. Links can also be followed with the Navigate tool, which only appears when links are present.

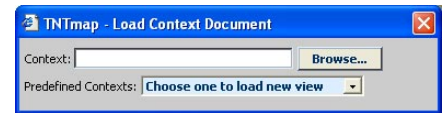


Navigate. This icon appears at the right of the toolbar *only* when MicroImages' special HyperIndex[®] links are available in an atlas. If the link is to other map and image data, a new instance of TNTmap Viewer is launched, which displays the linked map and image data when you click on the link. If the link is to a web site or an external file, the appropriate program is opened. If your browser blocks pop-ups, you will have to hold down the Ctrl key when you click so this new window can be opened.

Add DataTip and reference multiline DataTip QG

Viewing Actions

-  **Last View.** Returns you to your previous view.
-  **Go To Initial Extents.** Redisplays the same area of the atlas as when the current instance of TNTmap Viewer was opened. Layers that you have turned on or off while viewing remain in the same state as you set them.
-  **Next View.** Takes you forward to the view you had prior to using the Last View button.
-  **Overview On/Off.** Toggles the overview at the lower left on and off.
-  **Help.** Takes you to a web page that provides access to this help along with other information about TNTmap.
-  **Reload All Layers.** Retrieves new versions of all layers currently turned on from MicroImages' Web Map Service and refreshes the view.
-  **Load new view.** Opens the TNTmap - Load Context Document window so you can enter the location of or browse to a Context Document known to you or pick from known, predefined Context Documents.
-  **Open TNTmap Builder.** Opens a TNTmap Builder window so you can select layers to add to the current view or open other individually selected layers or predefined atlases from MicroImages' site in a new instance of TNTmap Viewer. You can also select layers for a new or existing view from any Web Map Service (WMS) compliant server. You can choose a WMS from the list provided or type in the URL for others you know of. This icon is not present if you opened TNTmap Viewer from TNTmap Builder installed on a Windows computer because an associated TNTmap Builder is already open. Closing an installed version of TNTmap Builder on a Windows machine, closes all TNTmap Viewers opened from it.
-  **Open in Google Earth.** Launches Google Earth with the entire atlas overlaid in place regardless of which layers you are currently displaying or the area showing in the current view. If multiple layers are present in TNTmap, they will remain individual layers in Google Earth so their display can be toggled on and off. If you just want an individual layer or you want to use layers from other WMS compliant sites, use TNTmap Builder to navigate to those sites and select layers for overlay.



layer list

pan buttons

the overview

view canvas

box that indicates part of overview being shown in the view

coordinates of cursor when in the view or overview

You can change the scale of the overview with the zoom in and out tools or using the right mouse button menu.

current map scale of view

Zoom to Scale button

- ▶ **Pan Buttons.** There are eight pan buttons around the view area, one at each corner and one in the middle of each edge. Clicking on any of these buttons pans the view 50% in the direction of your click, such that 50% of the new view area overlaps the previous view.
- ▶ **Zoom to Scale Button.** A click on this button will zoom you to the map scale you entered in the map scale field at the immediate left.

Legend

A list of layers currently available for the view is presented at the left of the Viewer if the layers are loaded separately rather than acquired as a composite image (by clicking on the *Render As Group* icon in TNTmap Builder). You can use the check boxes in this list to turn layers on and off. Color coding of the layer names indicates current layer visibility. You can change how the legend is displayed by clicking on the Save As TNTmap/Google Earth/World Wind icon in TNTmap Builder. The choices are: mixed legend (images only unless there is no image, then text is used), text only, images and text, and no legend. The more complex the legend, the longer it takes to retrieve. Also, there is no guarantee that legend images are available.

Green. If a layer name is green, that layer is present but not visible at the current zoom because the density of its elements would obscure other layers.

Blue. If a layer name is shown in blue, that layer does not overlap the area currently being shown in the view canvas.

Red. The initial state of all layers is red with a light background indicating the layers have not yet been loaded. Layers shown in red with a dark background were not successfully acquired from the designated WMS.

Black. Layers shown in black are visible provided they are not obscured by another overlay.

Right Mouse Button Menus

Each layer name, the overview, and the view canvas have menus that pop-in when you right-click.

Layer Name Right Mouse Button Menu

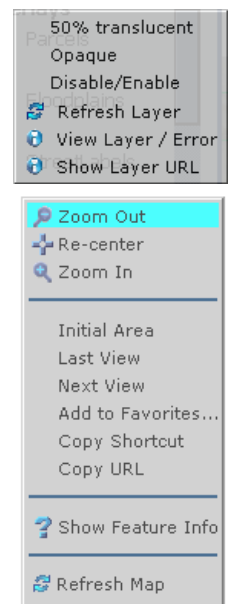
- Choose between 50% transparent and opaque for each layer,
- Turn layer requests on and off (when a layer is simply hidden, a request is still sent),
- Refresh individual layers
- View individual layers or errors encountered while layer is being loaded, and
- Show layer URL, which opens a window that displays the layer's URL.

View Canvas and Overview Right Mouse Button Menu

- Zoom in and out without changing the active tool,
- Recenter without changing the active tool, and
- Get feature information regardless of the active tool.
- Go to previous, next, and initial views, and
- Refresh all layers.
- The view right mouse button menu also has Cancel Point and End Line entries when measuring.

Windows Explorer Right Mouse Button Menu

- The Add to Favorites, Copy Shortcut, and Copy URL choices occur only if the web application TNTmap Viewer is open in Windows Explorer and you are viewing a published context. Add to Favorites lets you name an entry to be added to your Windows Explorer Favorites menu. Subsequently when you make this choice, TNTmap Viewer will open in Windows Explorer with the same atlas displayed. After using Copy Shortcut or Copy URL, you can paste the shortcut or URL where you want.



The Measure Tool



Measure. The Measure tool lets you make linear and area measurements by drawing over or around the features you want to measure. Click anywhere in the view to add the first point. The Measure tool is simple to use and has many features.

- **Drawing.** A vertex is added to the line you are drawing at each location you click. The measurements are updated as you draw. Each measurement has three values: length, area, and perimeter. Length is the length of the line you draw, while the perimeter value adds in the length of the closing segment.

- **Automatic Closure.** Once there are three vertices, a temporary closing segment is also added in **yellow**. The closing segment automatically adjusts as additional vertices are added.

- **Finish Line.** When done drawing, double-click or right-click and choose Finish Line from the right mouse button menu. You can also single-click on the start of the line or click on New Measurement in the Measurement window. When a line is finished, the closing segment turns **green** and all vertices are shown in **cyan**.

- **Units.** The default is standard international units (meters, kilometers, hectares). You can change to English units (feet, miles, acres) if desired. If you change between unit systems, your new choice is effective for the current measurement and subsequent measurements; it does not change the values for previous measurements. You can still change earlier measurements by making them active and changing the units.

- **New Measurement.** Clicking on New Measurement finishes the previous measurement, clears that measurement from the view, and poises the tool to begin a new measurement. Additional measurements are added to the Measurement window until you close it. You can choose another tool and the Measurement window remains open. If you switch back to the Measure tool, new measurements are added to the already open Measurement window.

- **Clear.** The Clear button removes all measurements from the Measurement window. To remove a single measurement, click on the Remove Polyline/Polygon icon for that measurement.

- **Icons.** There are three icons with each measurement: Edit this element, Zoom to Measurement Area, and Remove Polyline / Polygon.

- The first icon (pencil at upper left of the measurement entry) lets you reshape the line/polygon for that measurement by clicking on and dragging existing vertices or adding new vertices and dragging, which updates the measurement values.

- The Zoom to Measurement Area icon (lower left) will zoom in so that the shape drawn for that measurement fills the view with a 10% margin of the surrounding area added.

- The Remove Polyline / Polygon icon (upper right) removes the measurement from the Measurement window and the shape you have drawn from the view.

- **Right Mouse Button Menu.** There are two additions at the top of the right mouse button menu when you are measuring over the view canvas: Cancel Point and End Line. Cancel Point removes the last vertex added to the line you are drawing.

