

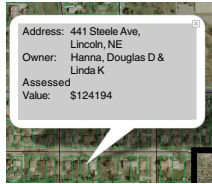
Use Google Maps to View WMS Layers

Layers selected from a TNTserver site or from any other Web Map Service (WMS) compliant server (ISO 19128) can be displayed in TNTmap Viewer, Google Maps, Google Earth, or World Wind using TNTmap Builder. This display can be immediate (the designated application is launched with the selected layers in place) and/or the web



map content can be saved for subsequent use (see the back of this page). When you launch into Google Maps using the icon in TNTmap Builder, you are using the Google Maps API together with extensions provided by the TNTmap web application or executable version. In this TNTmap version of Google Maps, you have the option of combining WMS layers (in other words, the layers selected for the Main View) with the Google map layer and/or the Google image layer. For example, the transparent Google map layer can be overlaid on your georeferenced and rectified images or orthophotos offered by TNTserver or any other WMS. Another option would be to overlay your transparent, styled vector layer from TNTserver on the Google imagery in addition to or in place of the Google map layer. The Google Maps search tools are also supported for moving directly to any location indexed by Google (for example, house address, business, city, or state). A feature can be measured using the tools provided by TNTmap. Information about individual features can also be displayed from the layers requested from a TNTserver (these are the DataTips associated with the TNT objects).

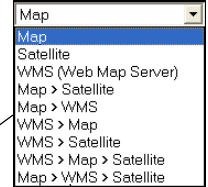
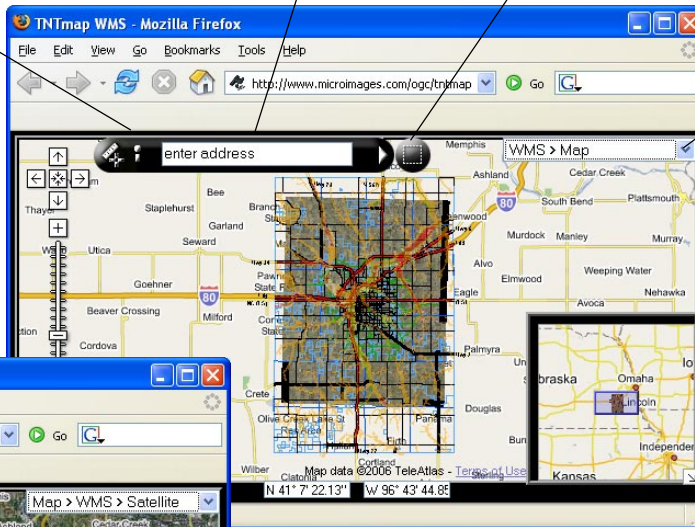
The Get Feature Info from the Web Map Server icon will change the cursor to a left arrow and



question mark that returns DataTip information set up in TNTmips for layers from TNTserver or similar information from other WMSs that support Get Feature Info requests at the location you click.

Enter any address indexed by Google Maps.

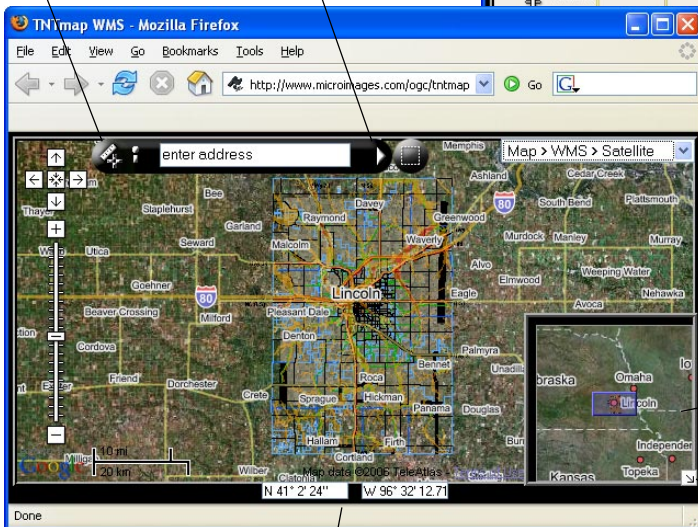
Pull-out Zoom Box supplements Google Maps' zoom tools (at left of window) with an elastic box to define the area to enlarge to fill the current view canvas.



The > symbol indicates the layer type to its left is displayed over the layer type to its right. For example, WMS > satellite means your layers selected in TNTmap Builder are displayed over the Google

The Measure tool reports additive length of the line created as you click from one location to another.

Go to address entered.



Maps satellite image(s) for the area. Note the different layer combinations specified above (WMS > Map) and below (Map > WMS > Satellite).

This is the standard overview provided by Google Maps that is derived from the layers in the current view. It does not use the layers on the Overview panel in TNTmap Builder.

Use this gadget to expand/collapse this Google Maps overview.

Geographic coordinate readout for cursor position is constantly updated.