

Spatial Editor

Using Web Layers as Reference Layers



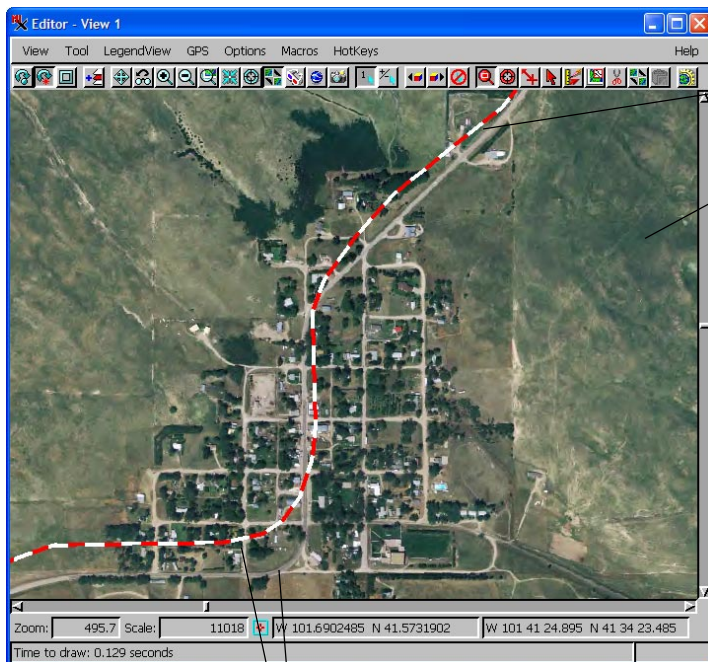
The Editor in TNTmips lets you use WMS and/or ArcIMS layers as reference layers while creating or editing local objects (objects found on your computer or your private network). You can add multiple web layers from one or more WMSs/ArcIMSs (see the Technical Guides entitled *Spatial Display: Select WMS Layers for Viewing* and *Viewing WMS Layers*) if desired. Each WMS/ArcIMS layer can be one layer or a composite of layers from a single WMS/ArcIMS.

The ability to use WMS and ArcIMS layers provides you access to unlimited terabytes of reference layers published on the Internet by many individuals and organizations. However, just as with any other web browsing experience, there is no guarantee that a layer will be received or continue to be available. If your access to a WMS/ArcIMS reference layer is lost in the course of an editing job, save your progress and save the group (Object/Save Group As) so you can readily continue your editing session at a later time. References to the WMS/ArcIMS layers (URLs) selected are saved as part of the group so that when it is opened later, the web layers can be automatically retrieved if the site(s) is responding.

MicroImages has compiled two catalog lists to assist in

your initial location of WMS and ArcIMS content providers, the appropriate one of which is found on the Catalogs panel of the Web Map Service Selection and ArcIMS Service Selection windows that open when you click on the Add Web Layer icon and choose the desired service. Even with this assistance, it may take you some time to locate layers of interest to you since there is such a wide variety of sites offering numerous layers. Some sites provide only global data while others may be limited to a local area or state. The web sites you have selected layers from are added to the list on the Recent tabbed panel in the Web Map Service Selection window so you can readily revisit sites you have selected from previously. Once you have found a site that provides layers you find useful, you can add it to the list on the Favorites tabbed panel in the same window.

Remember that WMS/ArcIMS content is dynamic and rapidly expanding. You may want to periodically revisit sites and reexamine listings on the Catalogs panel that were not of initial interest to see if they have added layers or sites that are of use to you as reference layers for your current editing needs.



Nebraska Highway 92 fits poorly with this orthophoto image of the city of Arthur (above). The orthophoto is a WMS layer from the Nebraska Land Viewer atlas, which is provided as one of the sample atlases on MicroImages' web site. The highway line, which is a local layer, was selected for editing and vertices were dragged to fit the highway in the image (right).

