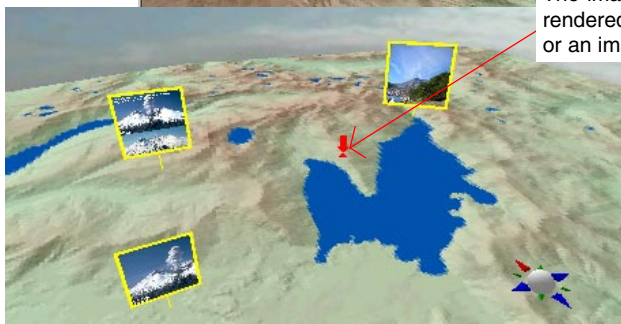
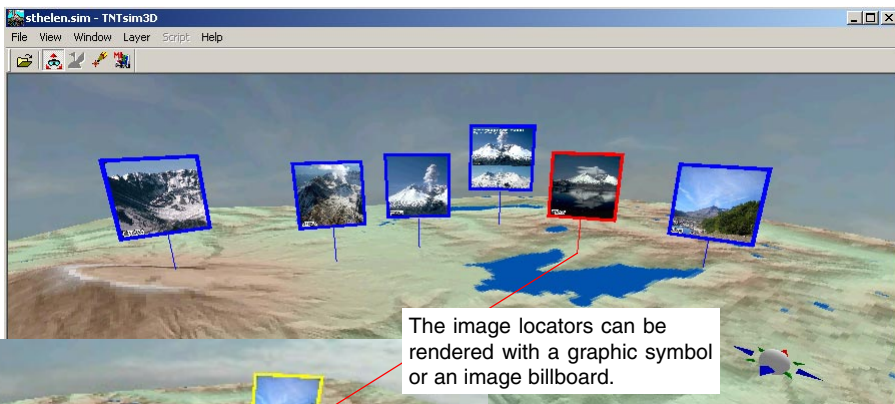


# TNTsim3D

## Render Digital Photos as Billboards

TNTsim3D can render digital photos as billboards using a geotagged image database. Once you have a geotagged image database for external or internal use with your landscape file, a graphic symbol for the position of each digital photo (image locator) is automatically added to your simulation. You can use various graphic symbols including image billboards to render the image locators. You can also view each digital photo in a separate image viewer window and keep track of the photo positions in your simulation and in the Map View.

The resizable image viewer window displays the digital photo connected to the active image locator and provides you the tools for switching between your digital photos and viewing them in detail. While viewing your photos, you can automatically view the landscape from the position of the photo or to display the position of the photo at the center of the view. The Options button provides you the tools to adjust style and color of the image locators. You can assign different graphic symbols and colors to the active and inactive image locators. When the image locators are rendered as image billboards, each digital image with an optional outline is raised on a vertical stalk in your simulation. The height of the vertical stalks and the width of the outlines are adjustable and there is also an option to scale billboards by distance.

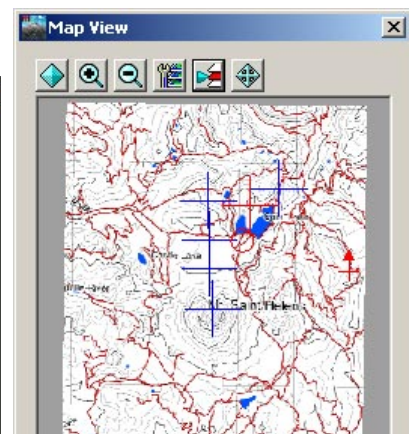


The illustration above shows digital photos of Mount St. Helen rendered as billboards in TNTsim3D. The illustration to the left shows the position of the photo at the center of the view with different styles and colors assigned. Note that the image billboards always face the current viewer position when you are flying through your simulation.

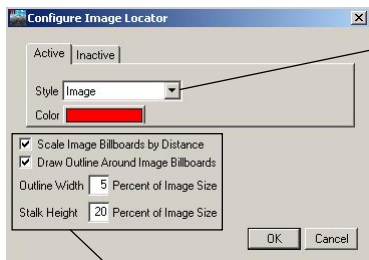


Click to zoom in/out, or to zoom to full extents/1.

Click to view next/previous digital photo.



The illustration (above) shows positions of the digital photos on a map. The active image locator is shown in red and the inactive image locators are blue. The digital photo connected to the active image locator is shown in the separate image viewer window (left).



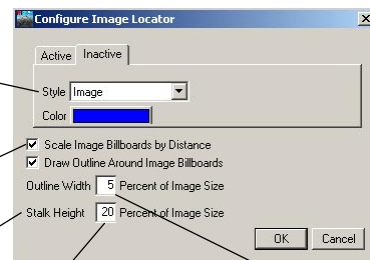
This section is active when Image is selected from the Style menu.

Select any style from the menu to style the locators.

Select Image from the Style menu to render digital photos as billboards.

Toggle on this button to get billboards automatically scaled by distance.

Toggle on this button to outline the billboards in the selected color.



Enter a value to adjust the height of the billboard stalk.

Enter a value to adjust the width of the billboard outline.