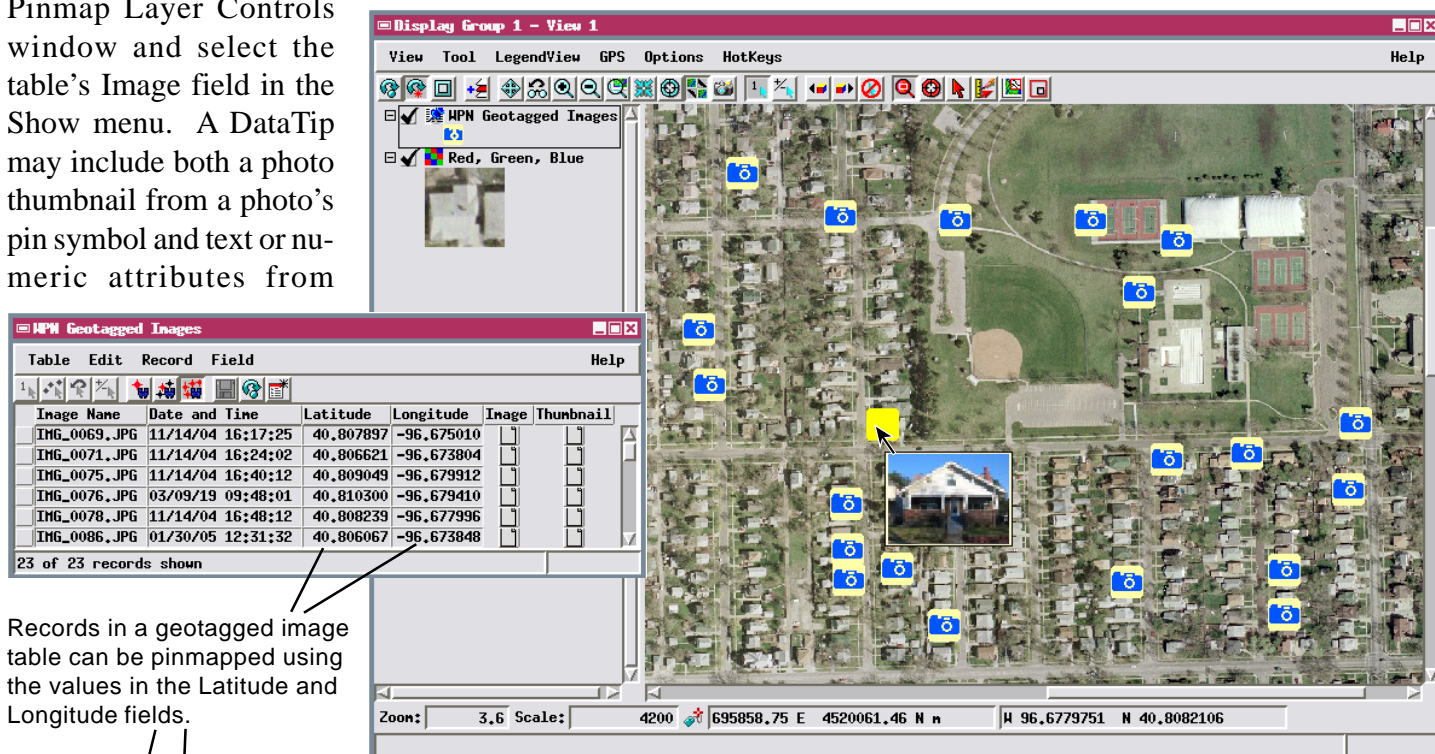


Pinmap Digital Photos with Photo DataTips

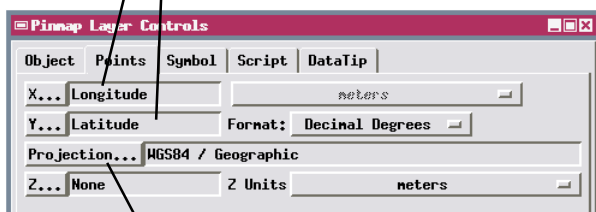
Records in a geotagged photo database table can be pinmapped in a geospatial view using the Latitude and Longitude field values created by the geotagging process. The pinmap layer can be overlaid on an image or any other type of geospatial data. You can set the pinmap layer to automatically pop in a thumbnail view of a photo when you hover the mouse on its photo location pin symbol. To do so, simply go to the DataTip panel of the Pinmap Layer Controls window and select the table's Image field in the Show menu. A DataTip may include both a photo thumbnail from a photo's pin symbol and text or numeric attributes from

elements in other layers in the view if DataTips are set up for those layers and an attributed element coincides with a photo pin location. Photo thumbnails in DataTips work for geotagged photo tables with links to external image files as well as for those with embedded images. For more information on creating a geotagged photo database see the Technical Reference Plate entitled *Digital Photos: Geotag Digital Photos from GPS Logs*.

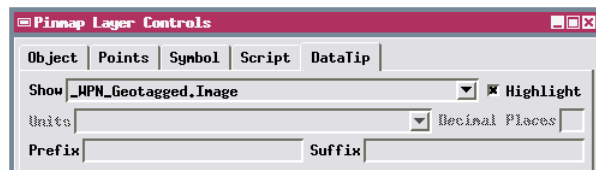
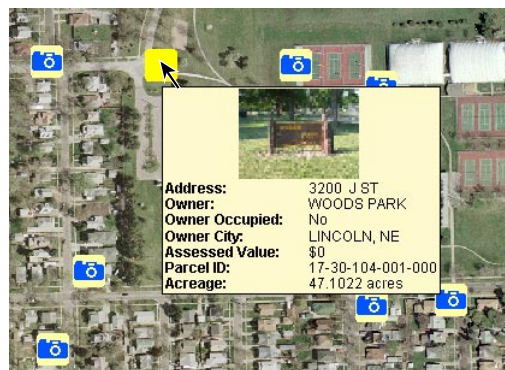


Records in a geotagged image table can be pinmapped using the values in the Latitude and Longitude fields.

Pinmap of digital photo locations using a custom pin symbol, showing the image DataTip for the highlighted pin.



Press [Projection] to set the Coordinate Reference System for the pinmap layer.



To set up pin DataTips to show the photo thumbnail, use the Show menu on the DataTip panel of the Pinmap Layer Controls to choose the Image field from the geotagged photo table.

If DataTips are set up for other layers in the view, the image in a pin's DataTip may be accompanied by attribute information for elements in these other layers. Here the image thumbnail is shown with property information from a vector polygon layer below the background orthoimage.