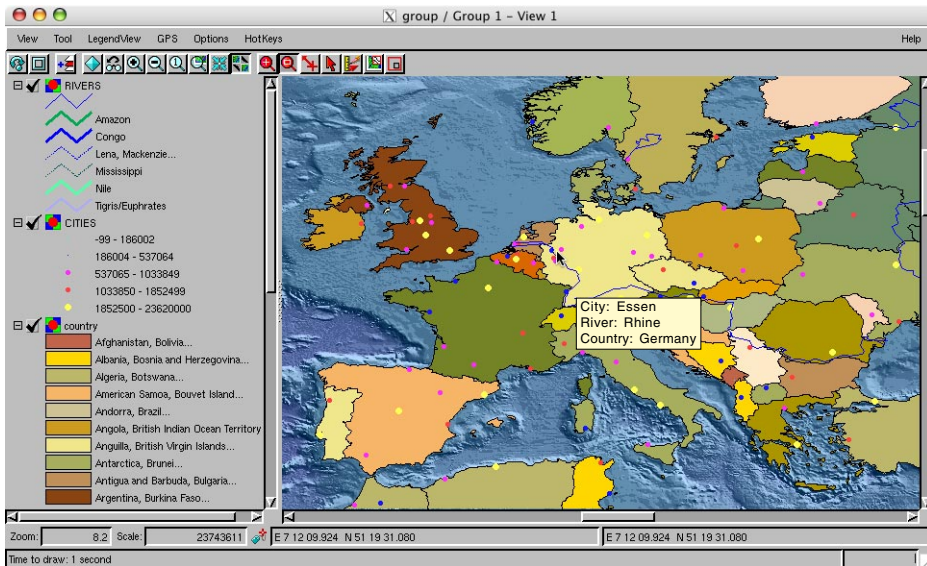


Direct Use of ESRI Shapefiles (*.shp)

DID YOU KNOW . . . you can directly view and use ESRI shapefiles in the TNT products?

What Directly Using ESRI Shapefiles Gives You

- View as layer(s) without importing the file(s)
- View without altering original file(s)
- Use same name *.avl for styles if present
- Use same name *.prj for georeference information if present
- Assumed as Latitude/Longitude if no *.prj and coordinates within $\pm 360^\circ$
- Advanced TNT product features maintained in link file (for example, DataTips)
- Select files for any TNT process, not just viewing, such as Vector Merge



The illustration above shows some of the advanced features you can use when displaying your linked shapefiles directly in the TNT products without changing the shapefile in any way. All three shape layers make use of DataTips, which are provided by a selected database field(s) and defined in the TNT link file (*.rlk). The selected database fields can be in the shapefile or the link file. The countries layer uses the *.avl file to provide polygon fill styles while the rivers layer uses styles created and assigned by attribute in TNTmips and the cities layer uses theme mapped styles to reflect population. These style specifications are maintained in the TNT *.rlk file and used automatically the next time the shapefile is used in TNTmips.

How to Directly Use ESRI Shapefiles

- Double-click on the file.
- Use Open With to open in new View in Spatial Data Display.
- Browse to and select file in any TNT Select Objects dialog.

WANT TO KNOW MORE?

See the tutorial booklet entitled:

Sharing Geodata with Other Popular Products

