

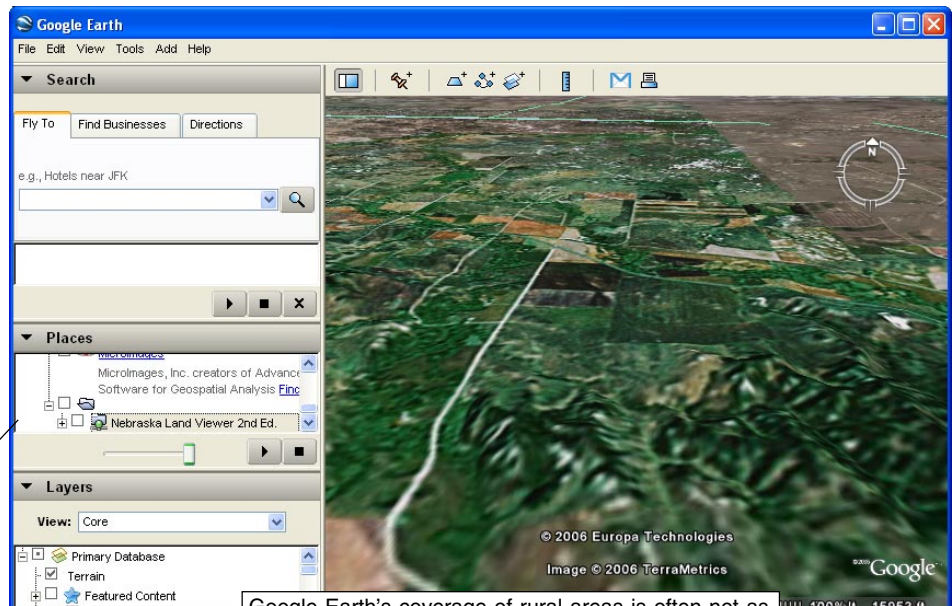
# Use Google Earth to View WMS Layers

Layers selected from a TNTserver site or from any other Web Map Service (WMS) compliant server (ISO 19128) can be displayed in TNTmap Viewer, Google Maps, Google Earth, or World Wind using TNTmap Builder. The display of selected layers can be immediate (the designated application is launched with the selected layers in place) and/or the web map context can be saved for subsequent use in any of these applications (see the back of this page for information on saving a web map context for Google Earth).

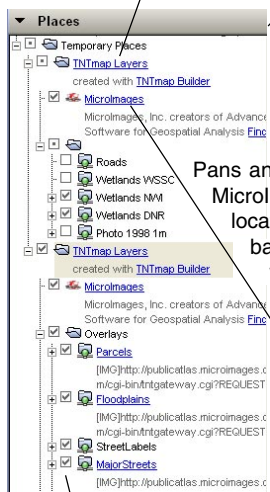


When you use the icon in TNTmap Builder to launch Google Earth, the layers currently selected for the Main View are added to the Temporary Places list in Google Earth under the heading TNTmap Layers, and you zoom to the approximate extents of your selected layers. The tilt and heading of your initial view will be the default, which is in the plane of the screen with north up, unless you have specified otherwise in your Google Earth settings (see the back of this page). If your Main View list in TNTmap Builder contained individual layers, you will have separate layers in Google Earth that can be turned off individually. You can have multiple sets of layers from TNTmap Builder listed under Temporary Places.

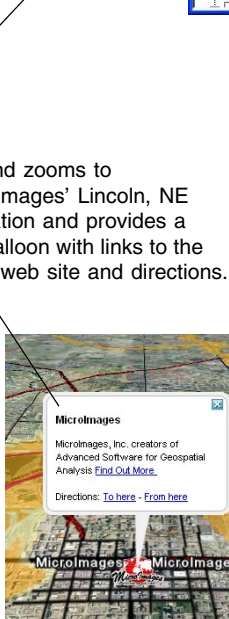
Each set will have a TNTmap Layers title, which is followed by an entry for MicroImages, and then the list of the one or more layers that were on the Main View list. Double-clicking on the title zooms you to the approximate extents of all the layers; clicking on any layer zooms Google Earth to the approximate extents of that layer.



Google Earth's coverage of rural areas is often not as high resolution as their urban coverage. You can use higher resolution data from any WMS to enhance your view in such areas of interest (below).



Pans and zooms to MicroImages' Lincoln, NE location and provides a balloon with links to the web site and directions.



Individual layers from TNTmap Builder can be turned on/off in Google Earth.

